



# GeoTexture

*Side Scan Sonar Image Processing,  
Mosaic Generation, Texture Mapping and  
Classification Software*

---

## **Introduction**

GeoTexture is a unique software package from GeoAcoustics for analysis of side scan sonar data. Side scan sonar image files may be loaded and processed for the production of mosaics. Multiple image files may also be loaded for bulk processing.

GeoTexture has a powerful suite of tools for normalising the side scan sonar image texture across the swath, which significantly improves the image quality for both human and machine interpretation. It can also be trained to remember and recognise multiple textures across and between images, and output classified maps. This makes GeoTexture an invaluable tool for interpreting sonar images of the seabed environment for applications ranging from civil engineering site survey to biological habitat mapping.

As well as standard side scan and image data formats, GeoTexture can also read the side-scan output files from the GeoSwath Plus shallow water bathymetric sonar, offering significant benefits to existing GeoSwath users in side-scan normalisation, image creation, and texture mapping.

---

## **Side Scan Sonar Image Processing**

- Trace Sampling
- Seabed Locate for water column removal
- Filter Bathymetry
- Trace Normalisation
- Slant Range Correction

---

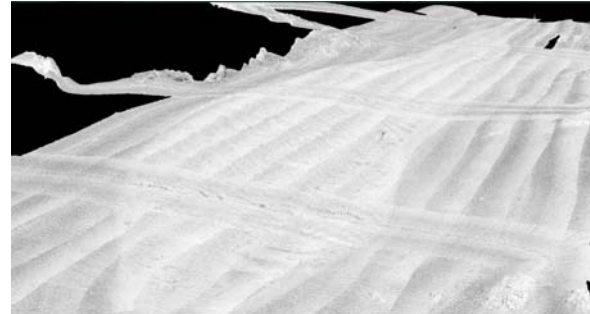
## **Trace Normalisation**

- Removes the effects of things other than seabed material from image texture
- Improves the interpretability of the image
- Allows amplitude based classification

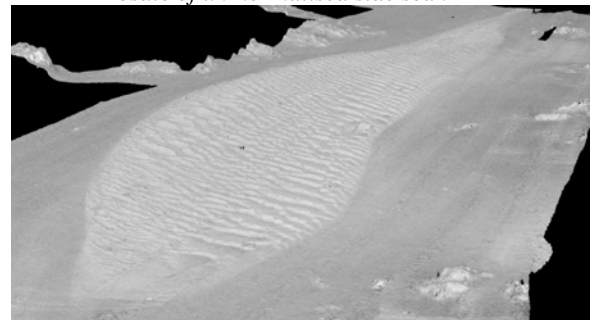
---

## **Mosaic Generation**

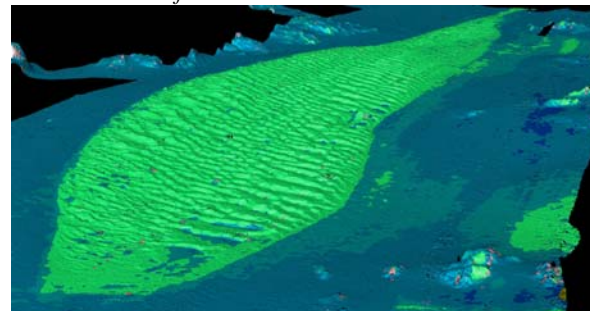
A mosaic image may be created or an existing one loaded. Geo-referenced images displayed in GeoTexture Swath Mode may be drawn into a mosaic at any stage during the processing of the image. In Mosaic Mode, multiple side-scan sonar image files (.swp or .xtf formats) may be loaded for bulk processing and subjected to the same processes available in Swath Mode before being drawn into the mosaic.



*Mosaic of un-normalised side scan*



*Mosaic of trace-normalised side scan*



*Classified image*

---

## **Feature Extraction and Image Classification**

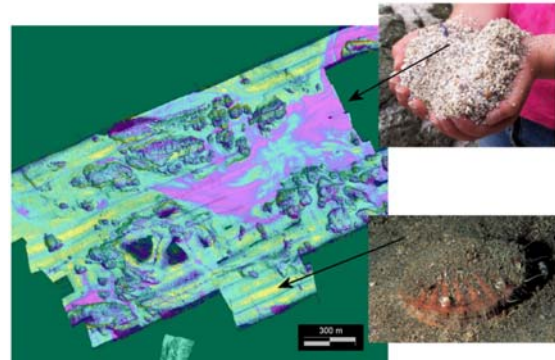
The texture mapping software extracts a feature vector around each image pixel and decides the best match with a characterised texture defined in supervised training. The colour code for that texture is used to set the pixel colour in the classified image.

- Supports user supervised image texture characterisation
- Classifies mosaic images or swaths
- Georeferenced classified image can be saved with a world file for GIS
- Multiple user-defined training areas
- Automated feature vector extraction
- Adjustable decision threshold

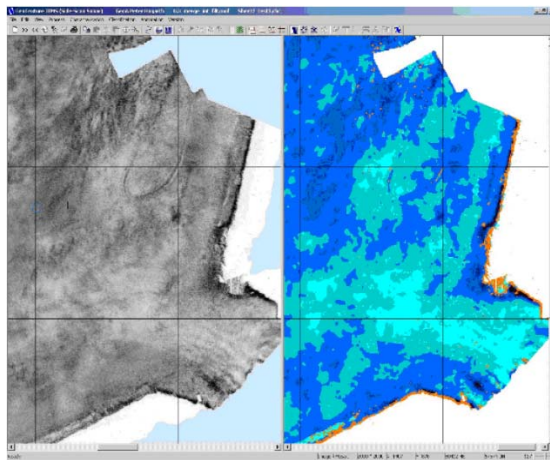
## GeoSwath Plus Interface

GeoTexture is designed to easily integrate with the GeoSwath Plus wide swath bathymetric sonar. The GeoSwath collects co-registered bathymetry and true digital side-scan data, from a well characterised bathymetric sonar system and motion sensor.

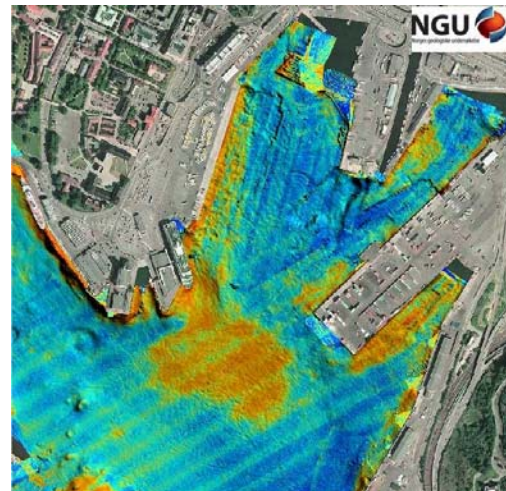
- Allows correction for beam pattern and beam pointing direction
- Side-scan roll and heave artefacts reduced
- Bathymetry data can be used for seafloor slope correction
- Classified images can be output as GeoSwath mosaic data.



Classified mosaic from the Norwegian Geological Survey, with ground truth samples.



Normalised and classified images of a harbour.



Classified side scan image of a ferry berth showing extent of sediment disturbance.

## GeoTexture Specifications

Operating System:	Windows™ XP PC.
Resolution:	User definable (both for loaded side scan data and mosaic generation).
Side Scan processing:	Bottom detect, bathymetry filter, beam pattern extraction, normalisation, slant range correction, 1D and 2D filters, mosaic generation.
Normalisation methods:	Range, grazing angle, beam pattern, transducer motion, seafloor slope.
Classification method:	Image based with user defined box sizes for supervised training.
Input data formats:	.jpeg, .bmp, .tif, .png, .tga, .pcx, .psd, .xtf, .mod, .mof, and GeoSwath .swp.
Output data formats:	Data image, classified image and characterised textures as .jpeg, .bmp, .tif, .png, .tga, .pcx, .psd, .xtf, .mod, .wmf, and GeoSwath .mof.

Specification sheet subject to change without notice. (9-Texture-6950/A 02/2008)



**GeoAcoustics Asia Pacific Pte Ltd**  
 30 Loyang Way, #07-12,  
 Singapore 508769  
 Tel: +65 6546 3687  
 Fax: +65 6546 3690  
 e-mail: singapore.sales@geoacoustics.com  
 www.geoacoustics.com



**GeoAcoustics Limited**  
 Shuttleworth Close, Gapton Hall Ind. Est.,  
 Gt. Yarmouth, Norfolk, UK, NR31 0NQ  
 Tel: +44 (0) 1493 600666  
 Fax: +44 (0) 1493 651100  
 e-mail: uk.sales@geoacoustics.com  
 www.geoacoustics.com



**GeoAcoustics Inc**  
 12626 William Dowdell Drive  
 Cypress, Texas 77429, USA  
 Tel: +1 281 894 5570  
 Fax: +1 281 894 7196  
 e-mail: us.sales@geoacoustics.com  
 www.geoacoustics.com